

**THE  
RUBIN  
MUSEUM  
OF  
ART**

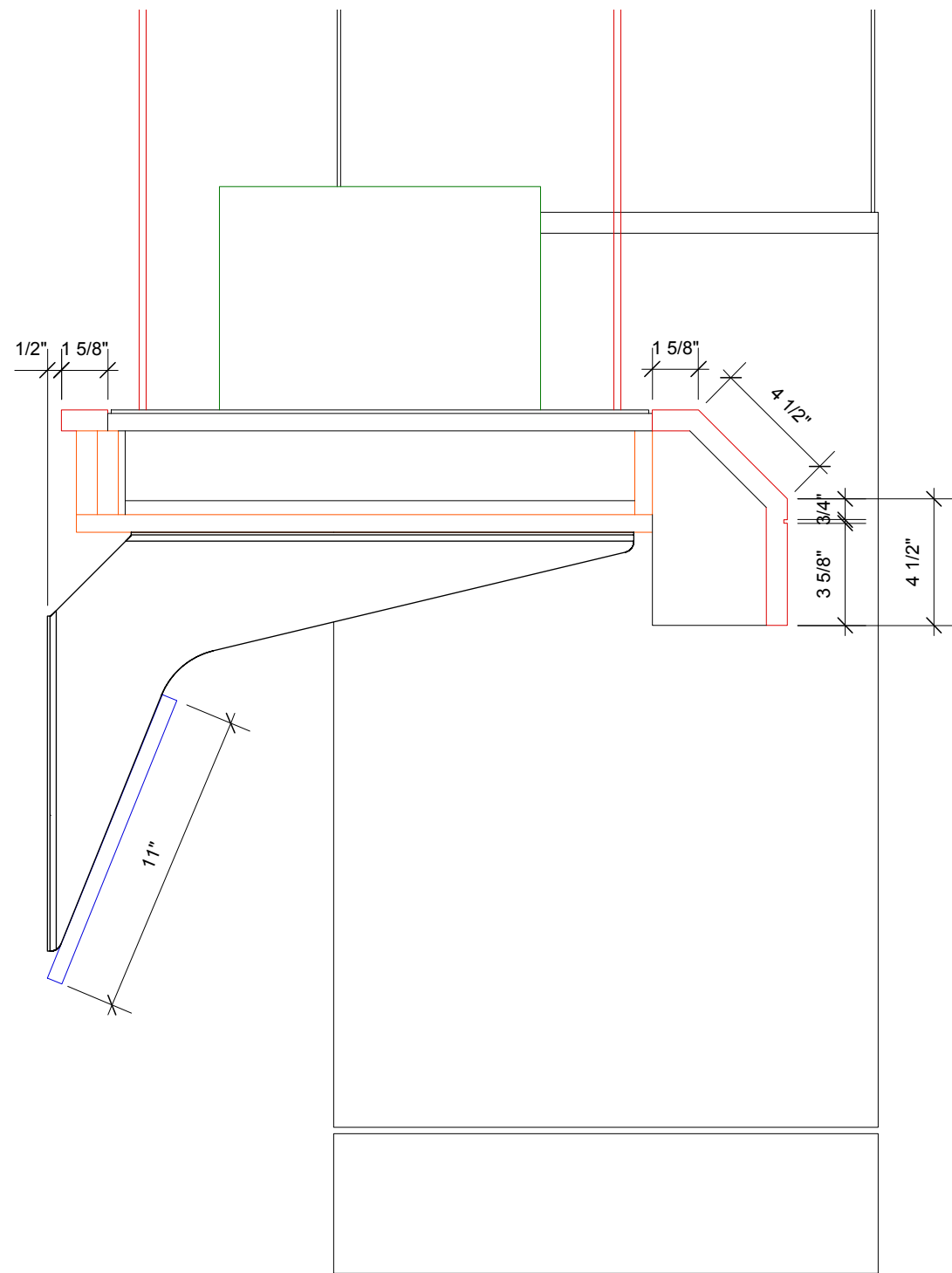
**John Monaco**  
212-620-5000 ext. 353

**Fabiana Weinberg**  
212-620-5000 ext. 271

140 West 17th Street  
New York, NY 10011

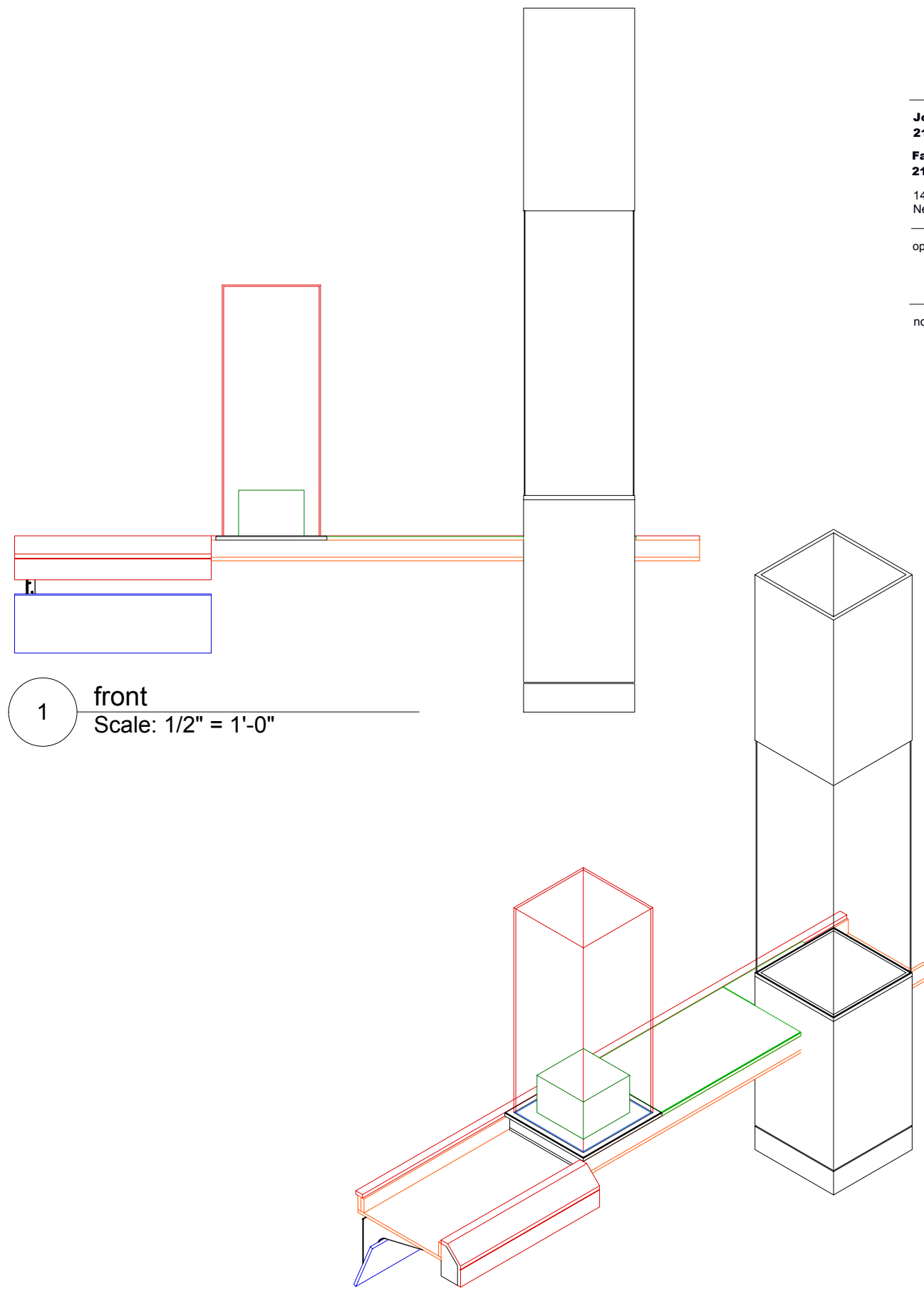
opening date:

notes:



2 side  
Scale: 2" = 1'-0"

1 front  
Scale: 1/2" = 1'-0"



ISSUED/REVISED		
No.	Date	Description
	12-16-14	

**DRAWING TITLE**  
Case Assembly NEW  
Masks

Scale

Issue Date

File Name

**DRAWING No.**